

CMAA San Diego 2015 Awards Banquet

April 16, 2015





LET'S ALL THANK TONIGHT'S SPONSORS!



THE Louis Berger Group, INC.



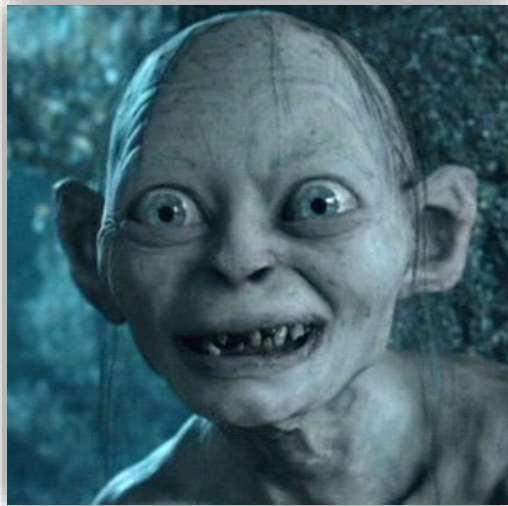
San Diego Chapter



MIKE KENNY

Master of Ceremonies

Construction Services Director
On-Site Technical Services, Inc.



+



=





MISSION

Promote the profession of Construction Management and the use of qualified Construction Managers on capital projects and programs.

VISION

All Owners will realize capital project and program success by using professionally qualified Construction Managers.

CMAA BOARD OF DIRECTORS



EXECUTIVE BOARD OF DIRECTORS

San Diego Chapter

President

Misha Troyan, P.E.
EPC Consultants

Vice President

Momo Savovic,
P.E. CCM, DEE
West Yost Assoc.

Treasurer

Doug Cook
RBF/ Baker

Secretary

Scott Lopian,
CCM
Tetra Tech

Past President

Arthur Serata, CCM
Arcadis

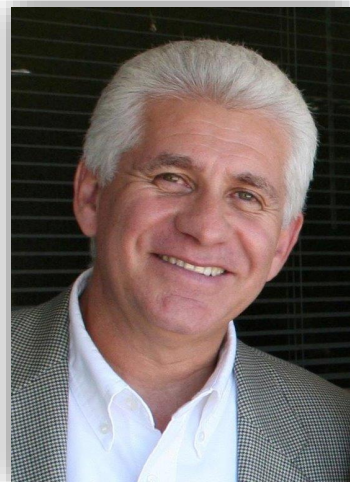


DIRECTORS EMERITUS

San Diego Chapter

Director Emeritus
Rod Posada, CCM

Otay Water District



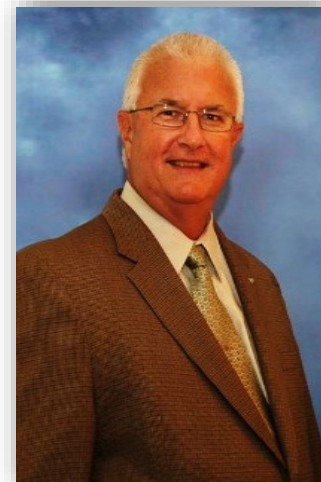
Director Emeritus
Mike Kenny

On-Site Technical



Director Emeritus
Wayne Papac

RBF / Baker



ACTIVITIES COMMITTEE



Committee Co-Chair:
Rod Bleakley
Simon Wong/Kleinfelder



Committee Co-Chair:
Larry Shaw
Parsons Brinckerhoff



SAVE THE DATE • FRIDAY, JUNE 12, 2015
2015 CMAA Golf Tournament • Rancho Bernardo Inn



ADVOCACY COMMITTEE

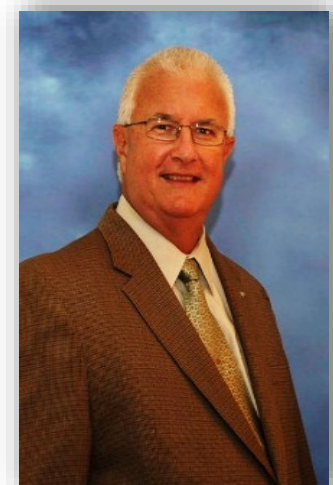
Committee Co-Chair:
Miles Phipen, P.E., CCM
Vanir Constructors LLC



Committee Co-Chair:
Wade Griffis, P.E., CCM
*San Diego County
Water Authority*



Committee Co-Chair:
Wayne Papac
RBF / Baker



TOP 4 ISSUES

<http://www.top4issues.com/>



+



=

**NEARLY
1,100 MEMBERS**



CCM COMMITTEE



Committee Co-Chair:
Scott Kube, CCM
Swinerton



**Certified Construction
Manager**

**Next CCM Application Workshop in September
&
Professional Construction Management
Seminar May 20th thru May 22nd**

**COMING
SOON**

CMIT COMMITTEE



Committee Co-Chair:

Justic Maletic
Balfour Beatty

GOALS:

- ❖ Promote CMIT Program
- ❖ Strengthen CMIT Community
- ❖ Mentorship



Committee Co-Chair:

Jack Garrett
Sharp Healthcare

The San Diego CMIT Chapter is one of the largest in the nation with nearly 100 members

COMMUNICATIONS COMMITTEE



Committee Chair:
Dusan Selezan
Balfour Beatty



WWW.CMAA-SD.ORG



GOVERNMENT AFFAIRS COMMITTEE



Committee Chair:

Laurence Philips

McKenna Long Aldridge

SEMINARS

Construction Law Update

The New AB 1565

Legal Series Part 1

Legal Series Part 2

Legal Series Part 3

GOALS

Track Legislation

Develop New Legal Seminars

MEMBERSHIP COMMITTEE



Committee Co-Chair:
Melanie Estes, P.E., CCM
DHS Consulting, Inc.



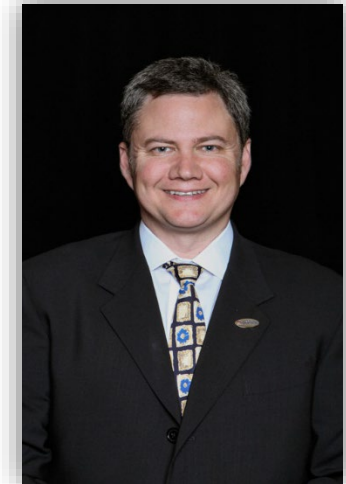
Committee Co-Chair:
Sevda Koraltan, PhD, PMP
CPM Partners, Inc.

- ❖ Exceeded 2013 & 2014 Owner Membership goals
- ❖ Current Membership: 617
- ❖ 2015 Goal: 700 members
- ❖ Constantly exploring new membership options

PROFESSIONAL DEVELOPMENT COMMITTEE



Committee Co-Chair:
Tom Calhoun, CCM, LEED AP
Sweetwater Union High School District



Committee Co-Chair:
Carl Schneider, CCM
SchneiderCM

SEMINARS

CM's Role in Schedule Management
Claims Avoidance
Inspections 101
Change Orders
Alternative Project Delivery
...and many more!

TOTAL ATTENDANCE

538

PROGRAMS COMMITTEE



Committee Co-Chair:
Joseph Smith, P.E., CCM
TY Lin International



Committee Co-Chair:
Agnes Weber
Vali Cooper & Associates

DINNERS

Owner's Night
NAVFAC & US Border/Customs
SDCDPW & SDCGSA
Healthcare
School Districts
City of San Diego
Water Agency Night
Convention Center Expansion
SANDAG....*and many more!*

Owners Night: attended by 300 members and prospective members.

VIP BREAKFAST PRESENTATIONS

Water Bond
SANDAG
Inspections 101....*and many more!*

Awards Banquet

STUDENT OUTREACH/SCHOLARSHIP COMMITTEE



Committees Chair:

Ashley Brigmon, EIT, CMIT
TY Lin International

❖ In 2015, 12 scholarships will be awarded to San Diego State and NewSchool of Architecture students totaling

\$30,000

❖ Student memberships are available at a discounted rate of \$25 per year

❖ Discounted student rates are available for CMAA seminars and dinners – see www.cmaa-sd.org student outreach tab for more information

2015 CMAA National Update



CMAA NATIONAL CHAPTER UPDATE

Rebecca Jones

*Chair Elect, CMAA National
SafeworkCM*



2015 CMIT RECOGNITION



2015 SCHOLARSHIP WINNERS



Student Outreach / Scholarship Committees

Committee Co-Chair:

Jack Garrett
Sharp Healthcare



Committee Co-Chair:

ASHLEY BRIGMON, EIT, CMIT
TY Lin International



Committee Co-Chair:

Justic Maletic
Balfour Beatty



SPECIAL RECOGNITION

2015 Scholarship Committee

Ashley Brigmon, Chair

Scott Lopian

Carl Schneider

Wade Durant

Wade Griffis

Michael Manneh

Scott Kube

2015 Student Outreach Committee

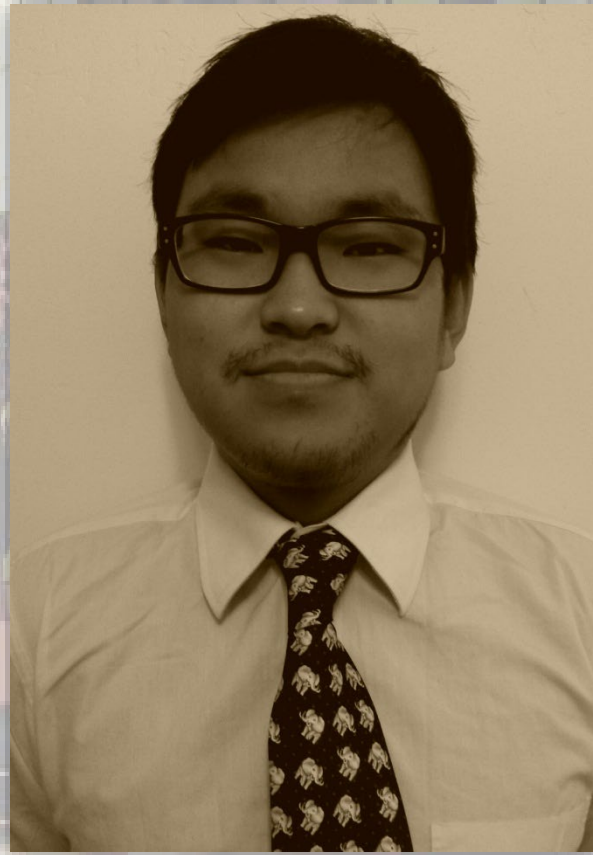
Ashley Brigmon, Chair

Justin Maletic

Jack Garrett

OBHI DEWAN- \$1,250

NEWSCHOOL OF ARCHITECTURE + DESIGN



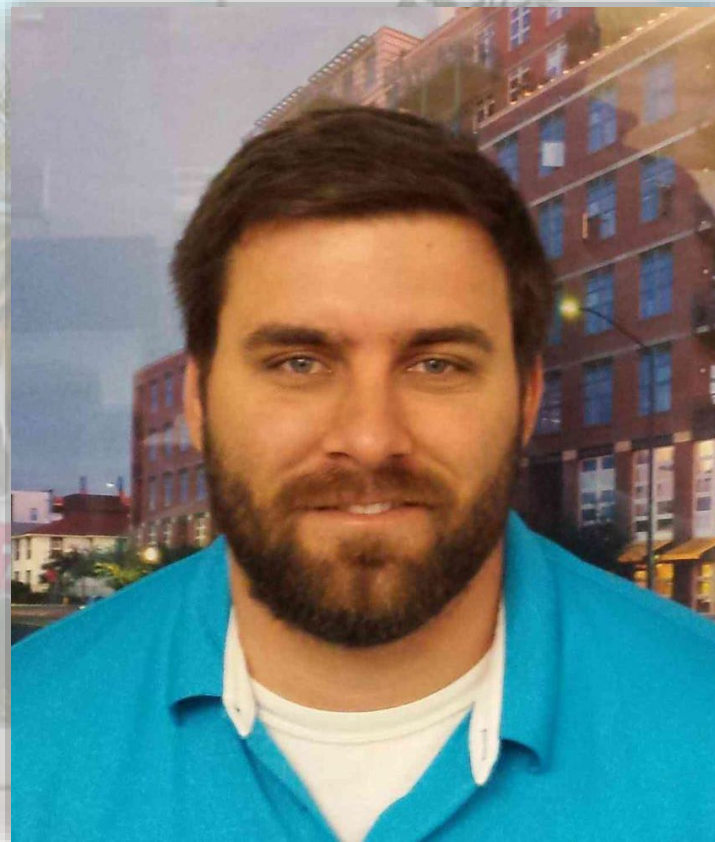
JOSE PONCE - \$1,250

NEWSCHOOL OF ARCHITECTURE + DESIGN



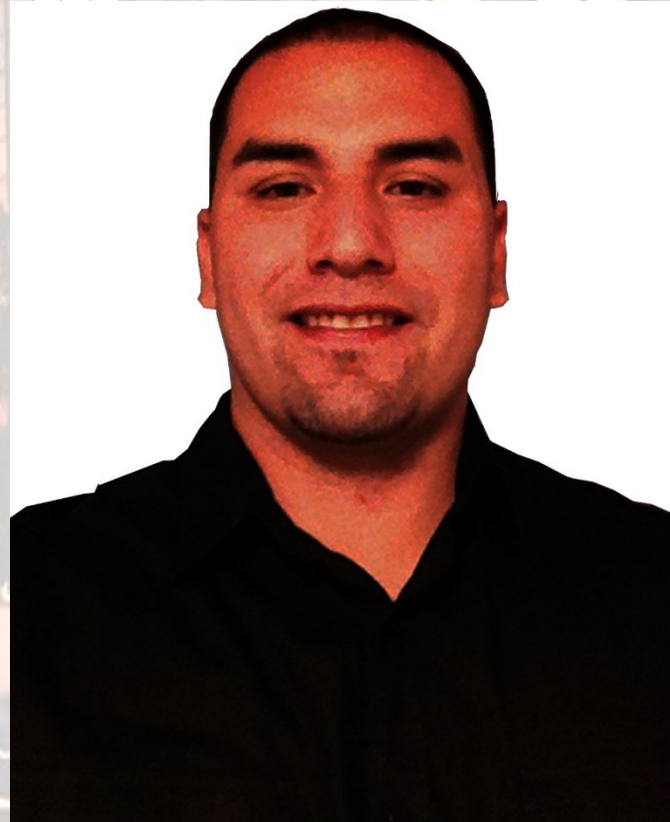
ELIJAH ELLIOTT \$1,500

SAN DIEGO STATE UNIVERSITY



RUBEN BRAVO - \$1,750

NEWSCHOOL OF ARCHITECTURE + DESIGN



PETER LEE - \$1,750

SAN DIEGO STATE UNIVERSITY



ADRIAN CHIPRES - \$1,750

SAN DIEGO STATE UNIVERSITY



JOHN HARRIS - \$2,250

SAN DIEGO STATE UNIVERSITY



ALEXA RIZEQ - \$2,750

SAN DIEGO STATE UNIVERSITY



KEITH WALSH - \$2,750

SAN DIEGO STATE UNIVERSITY



CHRIS LERMA - \$3,000

NEWSCHOOL OF ARCHITECTURE + DESIGN



TAN PHAM - \$3,000

NEWSCHOOL OF ARCHITECTURE + DESIGN



IRWIN MADRIAGA - \$3,250

NEWSCHOOL OF ARCHITECTURE + DESIGN



2015 Richard J. Mendoza Scholarship

01/13/41 – 10/02/14



mendoza
& ASSOCIATES
CONSULTING ENGINEERS

KRYSTAL REYES - \$3,750

SAN DIEGO STATE UNIVERSITY





2015 PROJECT ACHIEVEMENT AWARDS



SPECIAL RECOGNITION

2015 Project Awards Program Committee

Chair: *Joe Smith*

Committee:

Carl Schneider

Melanie Estes

Tom Calhoun

Larry Shaw

Mike Kenny

Justin Maletic

Misha Troyan

Patrick McGarry

Momo Savovic

Arthur Serata

Scott Lopian

Sevda Koraltan

PROJECT AWARD -- TRANSPORTATION

\$5 to \$15 Million

Sabre Springs/Penasquitos Transit Station *San Diego Association of Governments (SANDAG)*

CM FIRM:



Harris & Associates.

Sabre Springs/Penasquitos Transit Station



Sabre Springs/Penasquitos Transit Station



SANDAG

PROJECT AWARD -- TRANSPORTATION

\$5 to \$15 Million

Mid-City Rapid Bus Project

San Diego Association of Governments (SANDAG)

CM FIRM:



Mid-City Rapid Bus Project



SANDAG

Mid-City Rapid Bus Project



SANDAG

PROJECT AWARD -- TRANSPORTATION

Greater than \$15 Million

Port of San Diego North Embarcadero Visionary Plan (Phase 1)

San Diego Unified Port District

CM FIRM:



Port of San Diego North Embarcadero Visionary Plan (Phase 1)



San Diego Unified Port District

Port of San Diego North Embarcadero Visionary Plan (Phase 1)



San Diego Unified Port District

PROJECT AWARD -- TRANSPORTATION

Greater than \$15 Million

San Ysidro Land Port of Entry Expansion and Reconfiguration Project, Phase 1

U.S. General Services Administration (GSA)

CM FIRM:

The logo for AECOM, featuring the letters 'AECOM' in a bold, black, sans-serif font. The letter 'E' is stylized with a horizontal bar that transitions from blue to green.

San Ysidro Land Port of Entry Expansion and Reconfiguration Project, Phase 1



U.S. General Services Administration (GSA)

San Ysidro Land Port of Entry Expansion and Reconfiguration Project, Phase 1



U.S. General Services Administration (GSA)

HONORABLE MENTION -- TRANSPORTATION

Greater than \$1.5 Million

Cabrillo Bridge (Laurel St. Overcrossing) Rehabilitation and Retrofit *Caltrans District 11*

CM FIRM:

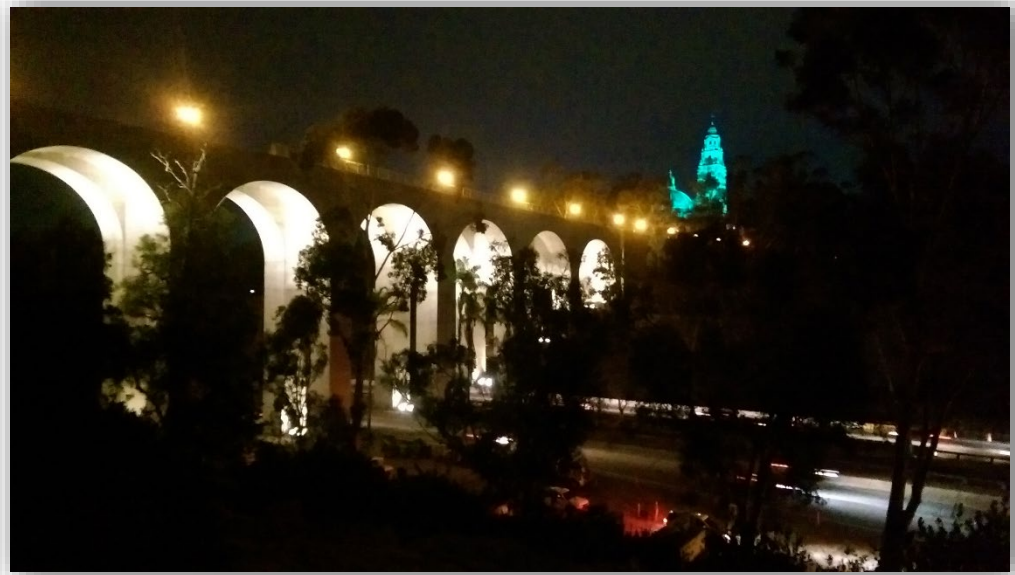


Cabrillo Bridge (Laurel St. Overcrossing) Rehabilitation and Retrofit



Caltrans District 11

Cabrillo Bridge (Laurel St. Overcrossing) Rehabilitation and Retrofit



Caltrans District 11

HONORABLE MENTION -- TRANSPORTATION

Greater than \$100 Million

Landmark Aviation F.B.O. Facility

Landmark Aviation

CM FIRM:

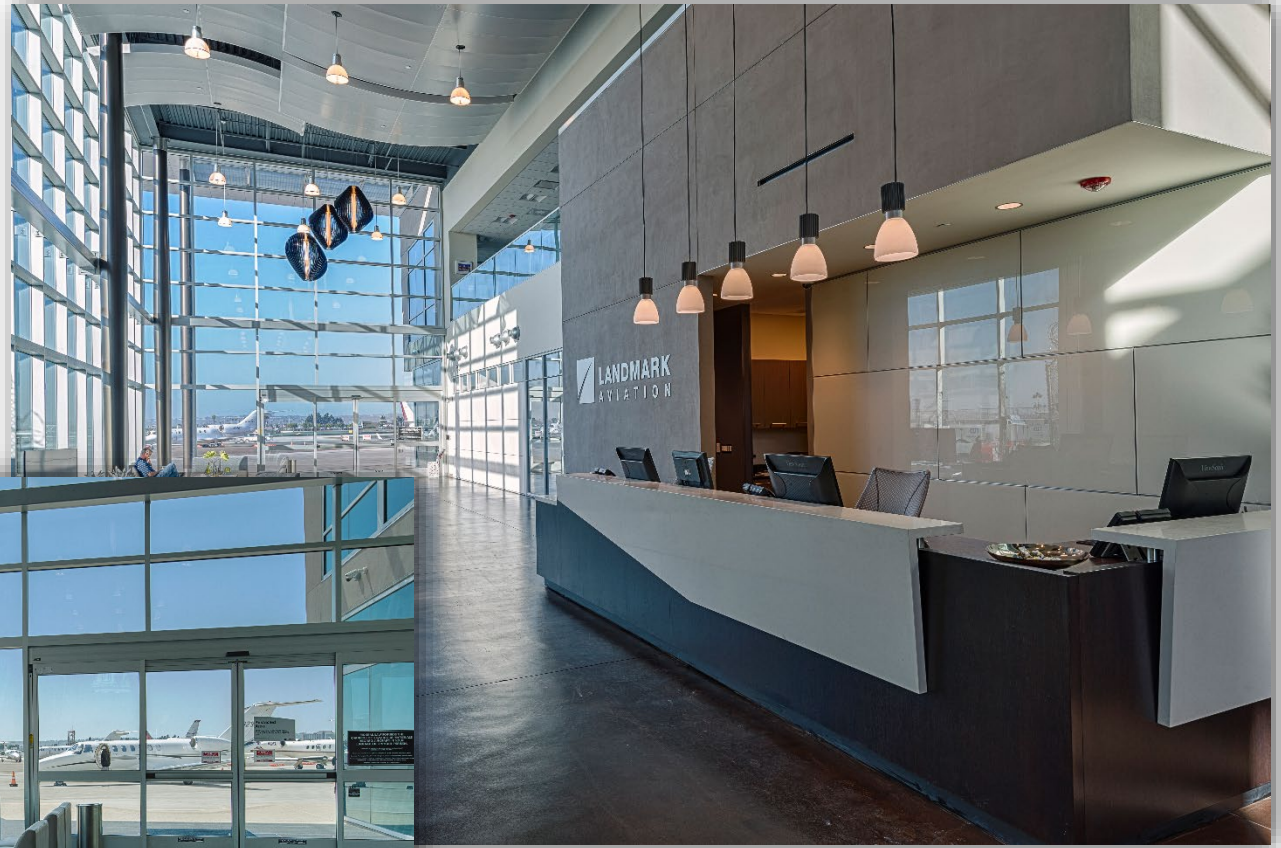
Turner

Landmark Aviation F.B.O. Facility



Landmark Aviation

Landmark Aviation F.B.O. Facility



Landmark Aviation

PROJECT AWARD -- PUBLIC WORKS

\$5 to \$15 Million

H Street Extension

San Diego Unified Port District

CM FIRM:



H Street Extension



San Diego Unified Port District

H Street Extension



San Diego Unified Port District

PROJECT AWARD -- PUBLIC WORKS

\$5 to \$15 Million

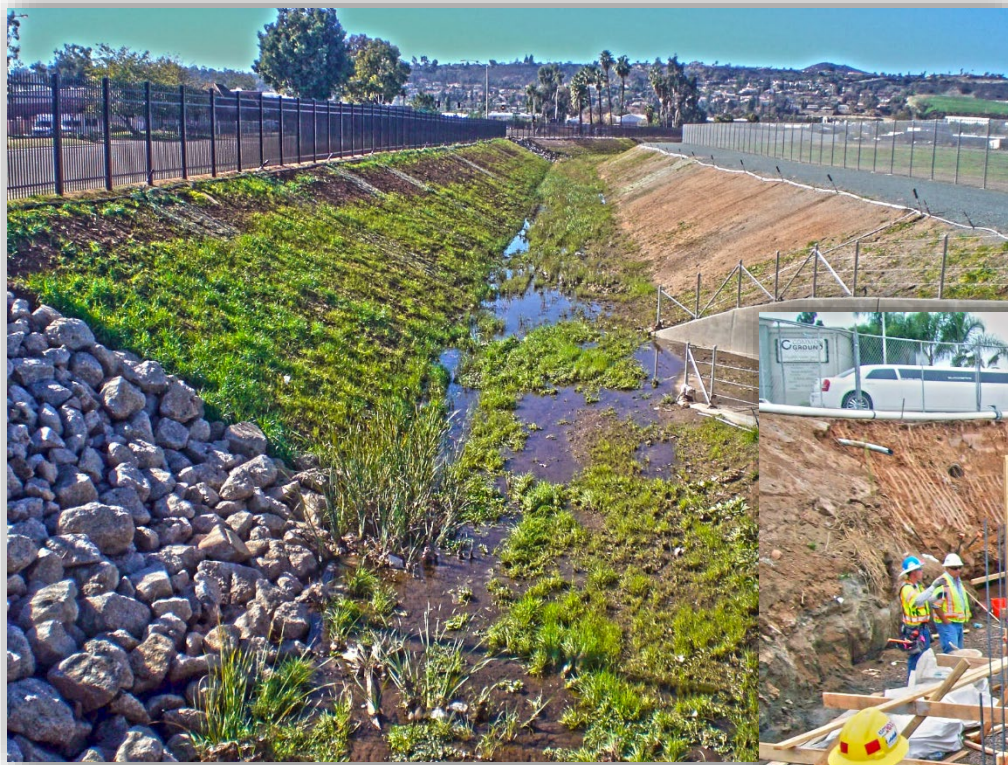
Wing Avenue Flood Control Improvement Project

County of San Diego

CM FIRM:

TYLIN INTERNATIONAL

Wing Avenue Flood Control Improvement Project



County of San Diego

Wing Avenue Flood Control Improvement Project



County of San Diego

HONORABLE MENTION -- PUBLIC WORKS

\$5 to \$15 Million

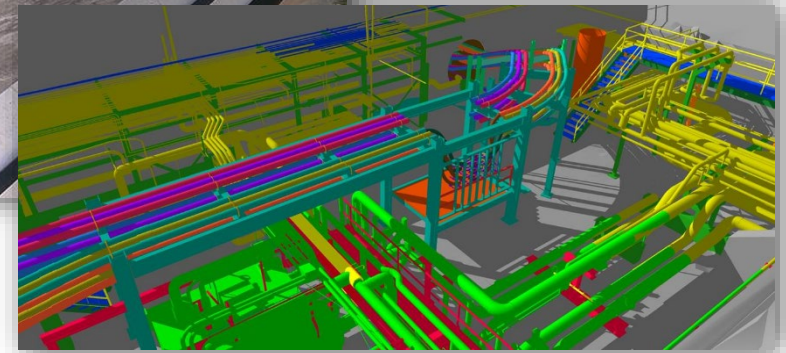
Poseidon Desalination Design/Construction Project

San Diego Gas & Electric (SDG&E)

CM FIRM:

The logo for NVI5, featuring the letters N, V, and 5 in a bold, blue, sans-serif font, with vertical lines separating the letters.

Poseidon Desalination Design & Construction Project



San Diego Gas & Electric (SDG&E)

Poseidon Desalination Design & Construction Project



San Diego Gas & Electric (SDG&E)

PROJECT AWARD -- PUBLIC WORKS

Greater than \$15 Million

**County of San Diego Admin Center
Waterfront Park & Parking Structure**
County of San Diego

CM FIRM:

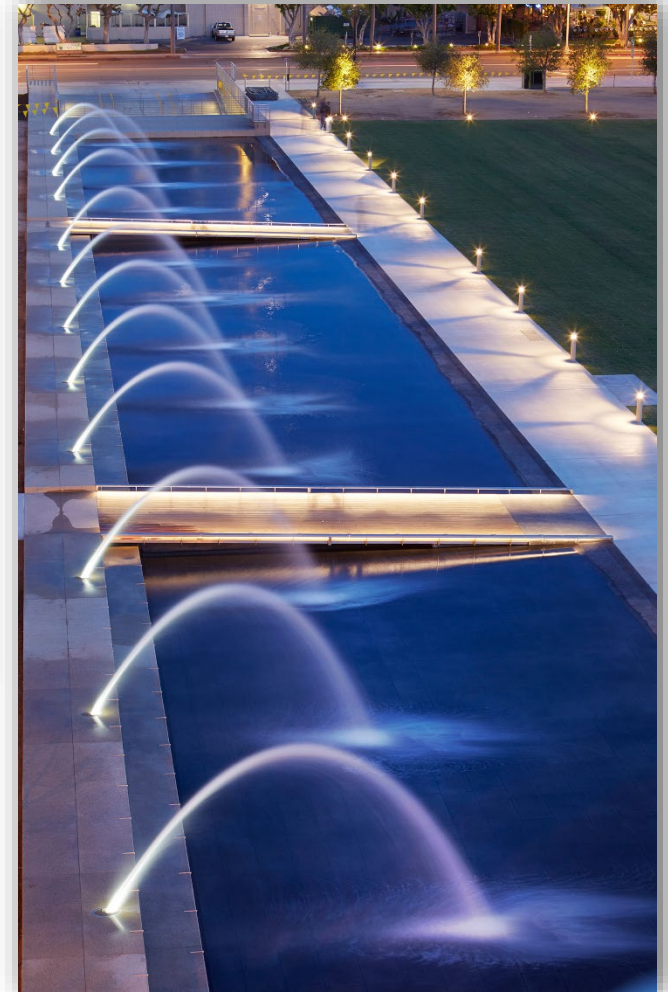


County of San Diego Admin Center Waterfront Park & Parking Structure



County of San Diego

County of San Diego Admin Center Waterfront Park & Parking Structure



County of San Diego



PROJECT AWARD -- BUILDINGS/RENOVATION

Knox Preparatory School

San Diego Unified School District

CM FIRM: **Schneider** 

Knox Preparatory School



San Diego Unified School District

Knox Elementary School



San Diego Unified School District

PROJECT AWARD -- BUILDINGS/NEW

Greater than \$25 Million

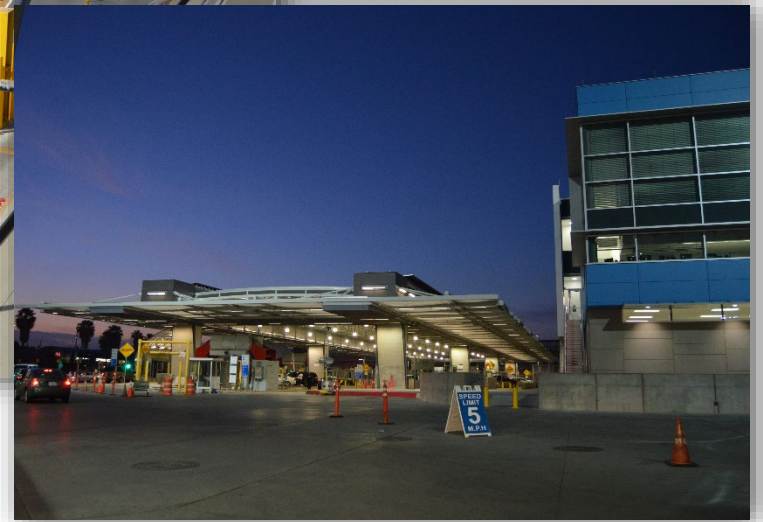
San Ysidro Land Port of Entry Expansion and Reconfiguration Project, Phase 1

U.S. General Services Administration (GSA)

CM FIRM:

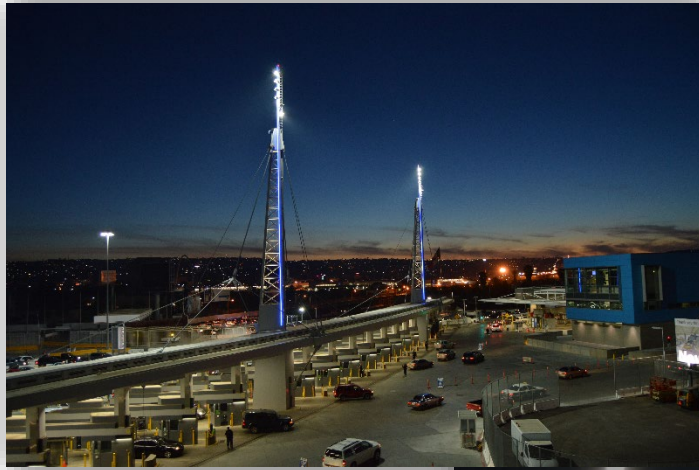
AECOM

San Ysidro Land Port of Entry Expansion and Reconfiguration Project, Phase 1



U.S. General Services Administration (GSA)

San Ysidro Land Port of Entry Expansion and Reconfiguration Project, Phase 1



U.S. General Services Administration (GSA)

HONORABLE MENTION -- BUILDINGS/NEW

Greater than \$25 Million

Las Colinas Detention and Reentry Facility *County of San Diego*

CM FIRM:



Las Colinas Detention and Reentry Facility (Phase 1)



County of San Diego

Las Colinas Detention and Reentry Facility (Phase 1)



County of San Diego

HONORABLE MENTION -- BUILDINGS/NEW

Greater than \$25 Million

Storm – Nasatir Hall

San Diego State University

CM FIRM:



O'Connor
Construction
Management, Inc.

Storm – Nasatir Hall



San Diego State University

Storm – Nasatir Hall



San Diego State University

2015 PROJECT OF THE YEAR



BUILDINGS / NEW CONSTRUCTION

Greater than \$25 Million

Southwestern College Central Plant, Field House and DeVore Stadium Improvements

Southwestern College (SWC)

CM FIRM:

Balfour Beatty

Southwestern College Central Plant, Field House and DeVore Stadium Improvements



Southwestern College (SWC)

Southwestern College Central Plant, Field House and DeVore Stadium Improvements



Southwestern College (SWC)

2015 CHAPTER APPRECIATION AWARDS



DISTINGUISHED OWNER HONOREES



Gary Halbert, P.E.

*Assistant City Manager
City of Chula Vista*



Tony White, CCM

*Construction Manager
City of Vista*



Dan Charlton, P.E.

CCM

*Engineering Manager
Coachella Valley Water District*



Rod Posada, CCM

*Chief, Engineering
Otay Water District*



DISTINGUISHED OWNER HONOREES



John W. Coon, P.E.

*Chief Engineer/Capital
Improvements Business Line
Coordinator
NAVFAC SW*



**Dr. Steven L. Crow,
ED.D.**

*Vice President
Business and Financial Affairs
Southwestern Community College
District*



Jim Linthicum

*Director of Mobility Management
San Diego Association of
Governments*



Iraj Ghaemi, P.E.

*Director Facilities Development
San Diego County Regional
Airport Authority*



DISTINGUISHED OWNER HONOREES



Laurie Berman

*District Director
Caltrans District 11*



Patrick McGarry, CCM

*Civics Project Manager
City of Carlsbad*



**Wade Griffis, P.E.,
CCM**

*Senior Construction Manager
San Diego County Water Authority*



**Dirk Epperson, P.E.,
MPA**

*Manager, Engineering-Construction Dept.
San Diego Unified Port District*



DISTINGUISHED OWNER HONOREES

San
Dieguito
Union High School District

John Addleman

*Director, Planning
San Dieguito UHSD*



Bill Morgan, P.E.

*LUEG Program Manager,
Construction Engineering
County of San Diego*

CLIENT OF THE YEAR



SWEETWATER
UNION HIGH SCHOOL DISTRICT

MEMBER FIRM OF THE YEAR

***Schneider*CM**

FRIEND OF THE INDUSTRY



San Diego Unified
SCHOOL DISTRICT

PRESIDENT'S SPECIAL SERVICE AWARD

Mark Johnson, P.E., BCEE

*Director of Engineering
Coachella Valley Water District*



HONOREE

Ramin Abidi, P.E.

*Deputy Director – Land Development Division
County of San Diego, Dept. of Public Works*





GOODNIGHT! THANK YOU SPONSORS!



THE Louis Berger Group, INC.



San Diego Chapter

