



The Future of San Diego International Airport

Dennis Probst, Vice President for Development
San Diego County Regional Airport Authority

CMAA San Diego Chapter
March 15, 2018

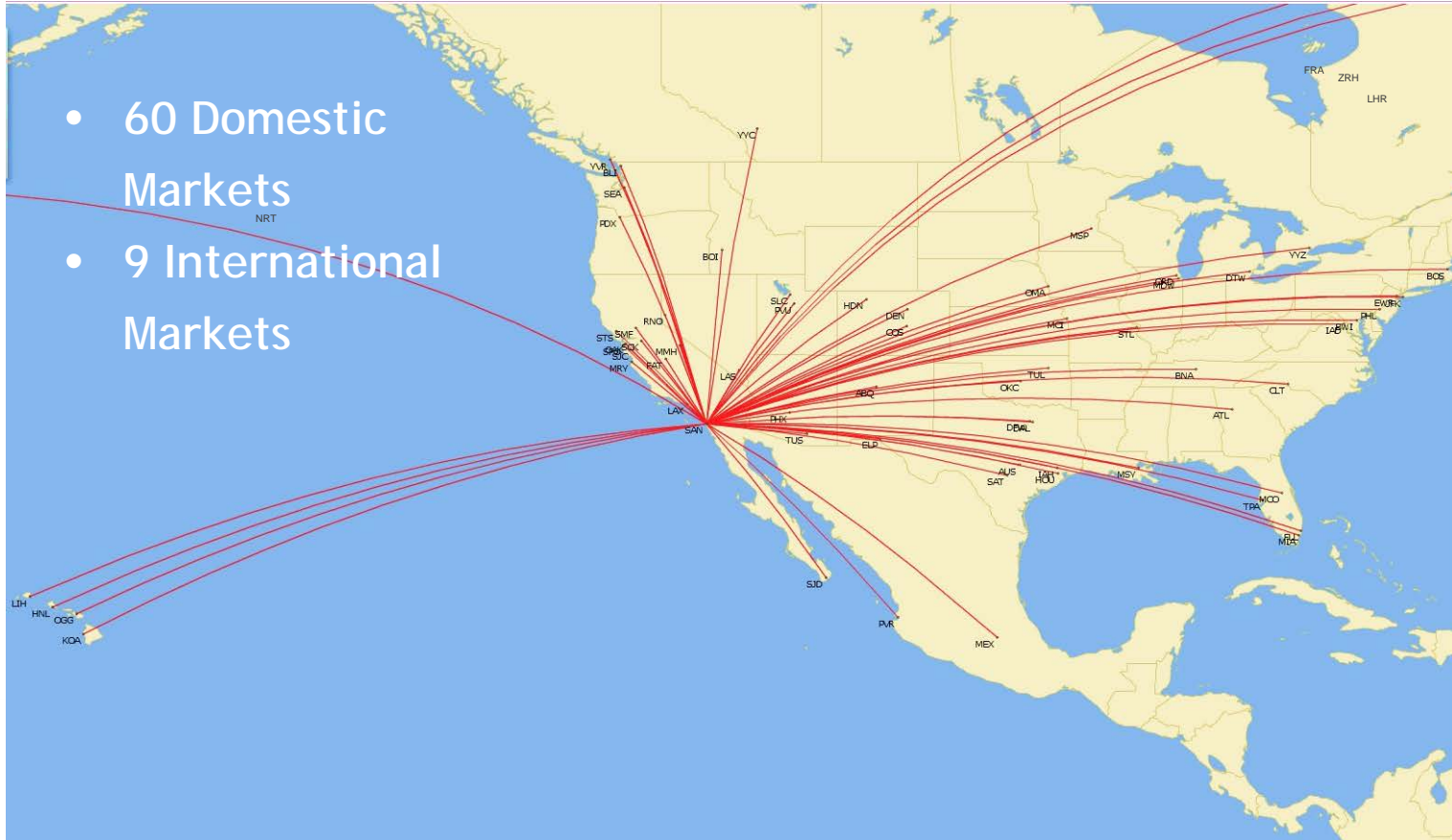
SAN by the Numbers

| | Daily | Annually |
|------------|---------------|------------|
| Passengers | 60,000 (avg.) | 22 million |
| Flights | 550 (avg.) | 203,000 |

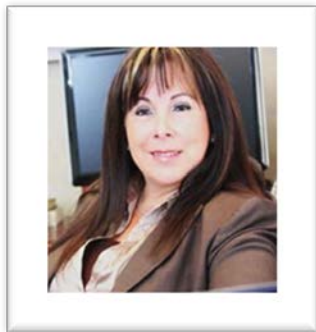
| | Airport Authority | Entire Airport |
|-----------|-------------------|-----------------|
| Employees | 407 | 9,000 (approx.) |

SAN Route Map 2018

- 60 Domestic Markets
- 9 International Markets



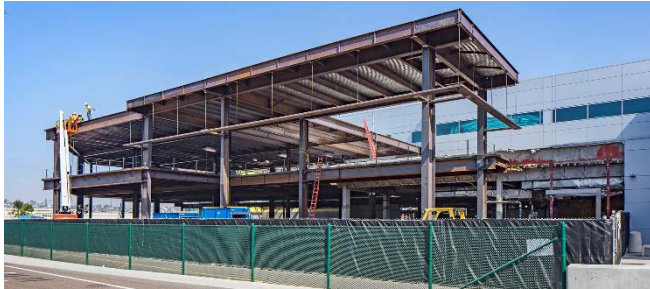
Small Business, Big Impact



New International Arrivals Facility



New International Arrivals Facility



Construction Progress

Safety and Quality By the Numbers

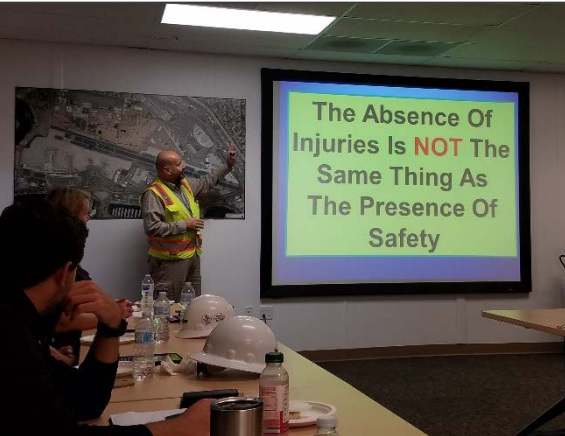
264,466 Project Man-Hours

1,515 Labor Safety Orientations

305 Work Plans Issued, Reviewed and Approved

128 Tenant Advisories Issued

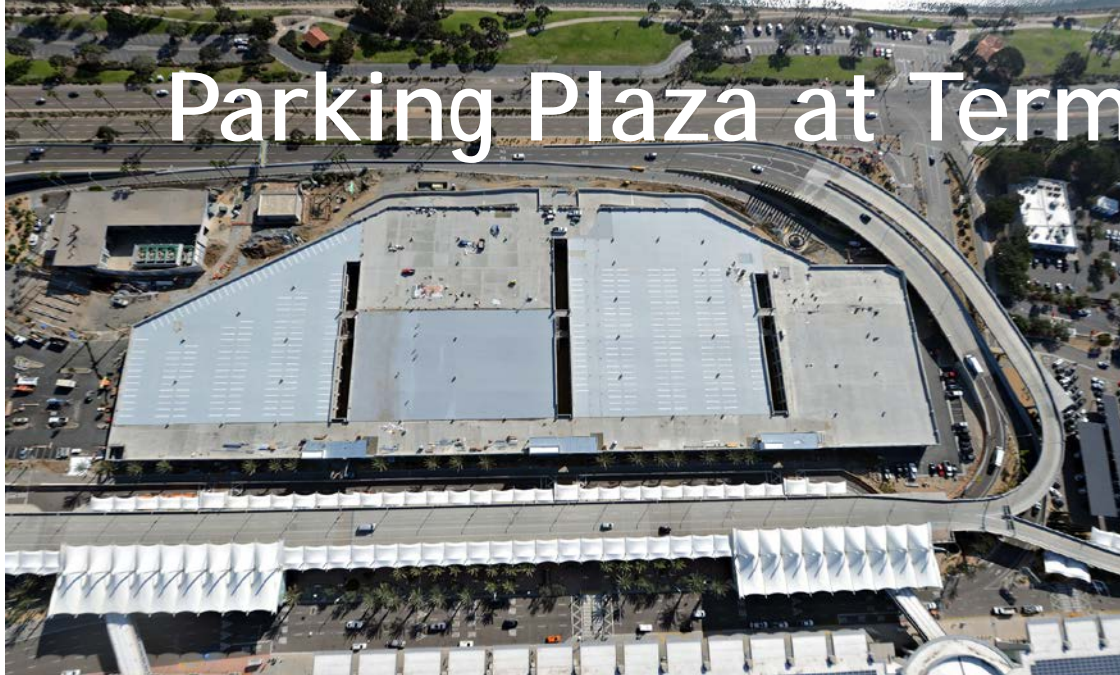
139 Subcontractors On-Boarded



Parking Plaza at Terminal 2



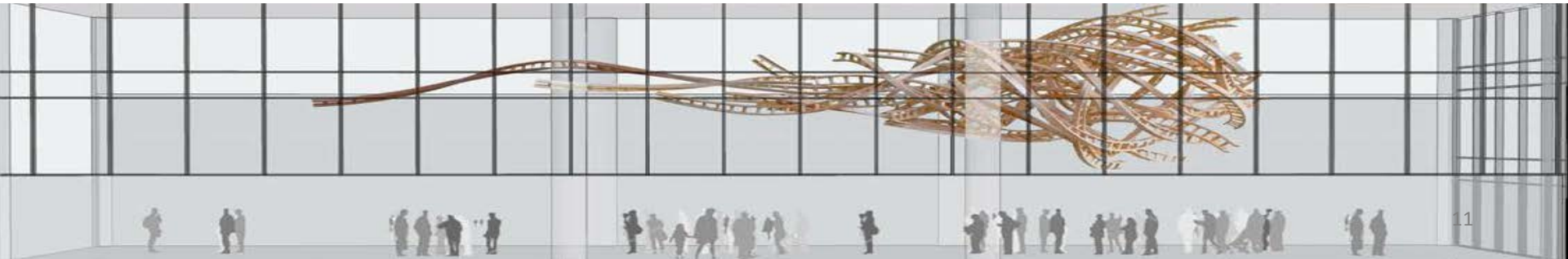
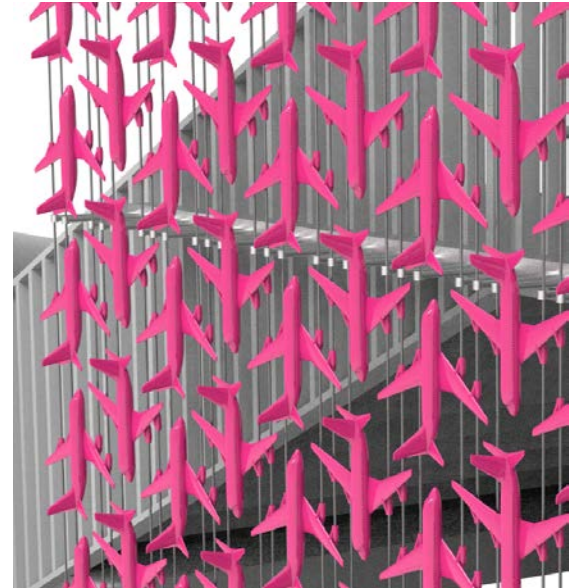
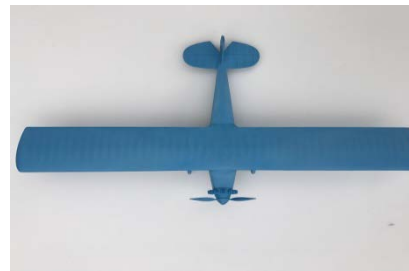
Parking Plaza at Terminal 2



Parking Plaza Construction Facts

- 33,000 cubic yards of concrete
- 47 major concrete pours
- 3,000 tons of rebar
- 2,400 linear feet of underground piping in Stormwater Reuse System
- 2.8 miles (14,730 feet) of underground conduit for 12kV electrical
- 6 miles of cabling for 12kV electrical
- 200,000 labor-hours in 2017

Public Art

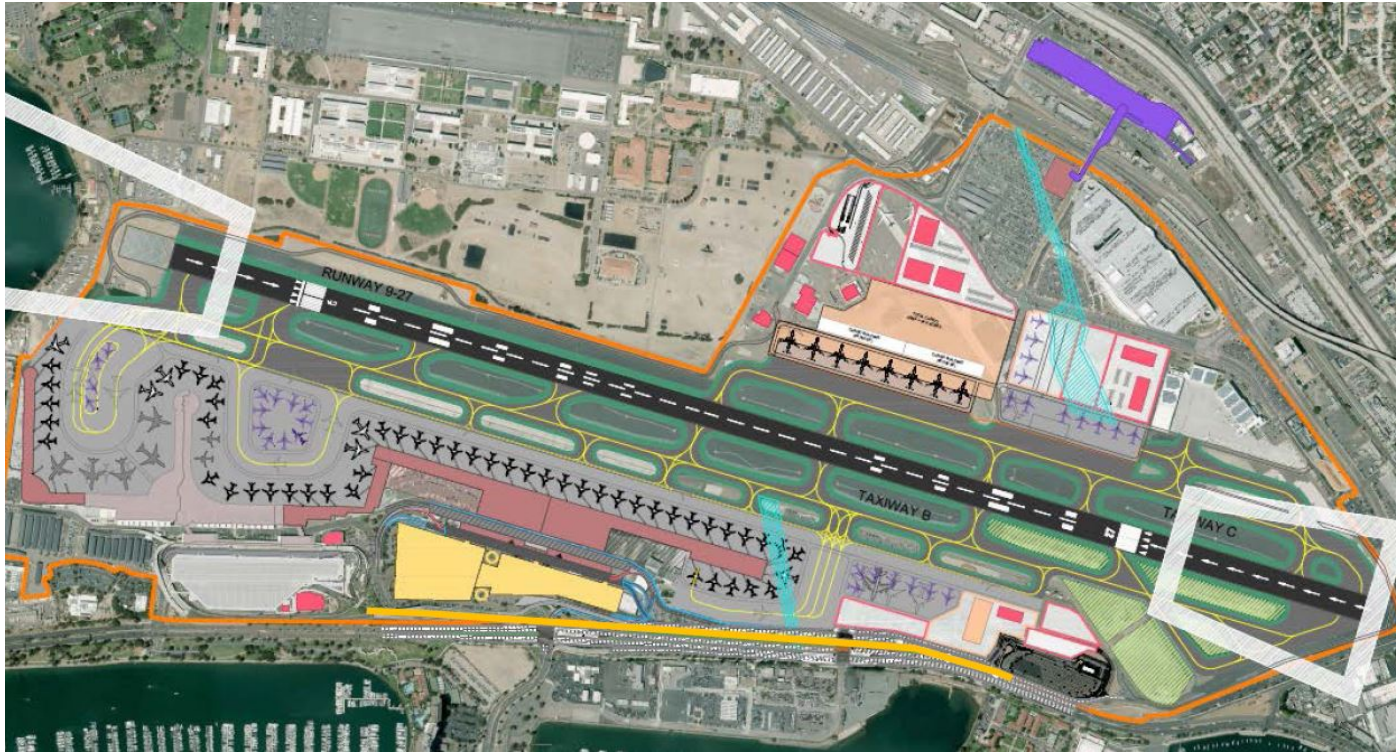


Runway Resurfacing



- Replaced top 3 inches of runway surface
- 890 tons of asphalt per night
- Work done midnight - 5 a.m. only
- Flight schedules unaffected

Airport Development Plan



A low-angle photograph of a modern airport terminal building. The building features a complex, multi-tiered structure with large glass windows and concrete panels. The sky is bright blue with some light clouds. A teal-colored overlay is present in the upper left quadrant, containing the text "Questions?".

Questions?

● Ticketing
U.S. Airways